



2019 International Tornado World, Global Mixed and Youth Championship, Powered by Candida Stationery

4th January 2019 to 10th January 2019

The Organising Authority is the **Takapuna Boating Club**, on behalf of the International Tornado Association, under the authority of **Yachting New Zealand**, and the **World Sailing**.

The Candida Stationery 2019 New Zealand International Tornado National Championship are being held From the 30th December 2018, to the 3rd January 2019, at Takapuna Beach, Takapuna, Auckland, New Zealand. That regatta is preceding the 2019 International Tornado World, Global Mixed and Youth Championship – powered by Candida Stationery, being held from the 4th January - 9th January 2019 at the same location.

SAILING INSTRUCTIONS

NB: The notation “[NP]” in a rule in the Sailing Instructions (“SI”) means that a breach of that rule shall not be grounds for protest by a boat. This changes RRS 60.1.(a)

The notation “[DP]” in a rule in the SI means that a breach of that rule may, at the discretion of the protest committee, be less than disqualification.

The notation “[SP]” in a rule in the SI means that a breach of that rule denotes a rule may, at the discretion of the race committee, be a standard penalty without a hearing or, a discretionary penalty applied by the International Jury with a hearing.

1 RULES

- 1.1 The regatta will be governed by the *rules* as defined in *The Racing Rules of Sailing 2017-2020*.
- 1.2 No national authority prescriptions will apply.
- 1.3 The Yachting New Zealand Safety Regulations Part 1 shall apply.
- 1.4 The ITA Class Rules "Appendix C - International Events" and the "Equipment Inspection



Regulation” will apply.

- 1.5 Under RRS 87, rule 44.1 is changed so that the Two-Turns Penalty is replaced by the One-turn Penalty.
- 1.6 In case of translation, if there is a conflict between languages the English text will take precedence.

2 NOTICES TO COMPETITORS

- 2.1 Notices to competitors will be posted on the official notice board located on the Main Deck of the Takapuna Boating Club.

3 CHANGES TO SAILING INSTRUCTIONS

- 3.1 Changes to the SCHEDULE of RACE, daily meeting and S.I. shall be subject to approval by the ITA Representative.
- 3.2 Any change to the sailing instructions will be posted no later than 120 minutes before the warning signal of the race affected by the change(s), except that any change to the schedule of races will be posted by 20:00 on the day before it will take effect.

4 SIGNALS MADE ASHORE

- 4.1 Signals made ashore will be displayed on the flagpole, outside the Main Deck of the Takapuna Boating Club. When a signal is displayed over a fleet flag it applies to that fleet only.
- 4.2 Rule 40 (Personal flotation Devices) applies at all times when boats are afloat. Flag “Y” will not be displayed. This changes RRS 40 and Race Signals.
- 4.3 When flag “AP” is displayed ashore, “1 minute” is replaced with “not less than **45 minutes**” in race signal “AP”. This changes Race Signals.
- 4.4 Flag D with one sound means “The warning signal will be made not less than **45 minutes** after flag D is displayed. Boats are requested not to leave the beach until this signal is made.”

5 SCHEDULE

- 5.1 10 races are scheduled for the regatta.



5.2 Dates of Racing:

Day/Date:	Class:	Class Flag:	No of Races:	Time of First Warning Signal:
Friday 4 th January, 2019	Tornado	Red Tornado class insignia on White background	Practice Race - 1	15:30
Saturday 5 th January, 2019	Tornado	Red Tornado class insignia on White background	2	13:00
Sunday 6 th January, 2019	Tornado	Red Tornado class insignia on White background	2	13:00
Monday 7 th January, 2019	Tornado	Red Tornado class insignia on White background	2	13:00
Tuesday 8 th January, 2019			Reverse Day	According to the day's schedule
Wednesday 9 th January, 2019	Tornado	Red Tornado class insignia on White background	2	13:00
Thursday 10 th January, 2019	Tornado	Red Tornado class insignia on White background	2	13:00

- 5.3 A skippers' meeting will be held on the Main Deck of the Takapuna Boating Club every racing day at 11:00.
- 5.4 The race officer may schedule one or more extra races per day if the regatta may fail to achieve the minimum number of races to constitute a series (SI § 17.2). The change shall be made according SI § 3.
- 5.5 The Reserve Day may be used if races are not completed as scheduled or if the race committee considers it unlikely that the regatta will complete the minimum number of races to constitute a series. The change shall be made according to SI § 3.
- 5.6 The scheduled time of the warning signal for the practice race is 15:30, and no warning signal will be made after 16:30.
- 5.7 On the last day of the regatta no warning signal will be made after 16:00.
- 5.8 To alert boats that a race or sequence of races will begin soon, the orange starting line flag will be displayed with one sound at least five minutes before a warning signal is



made.

6 CLASS FLAG

- 6.1 The class flag for the new rig Tornado will bear the red Tornado class insignia on a white background.

7 RACING AREA

- 7.1 Attachment **B** shows the location of the racing area.

8 THE COURSES

- 8.1 The diagram in Attachment A shows the courses.
- 8.2 The target time for the duration of a race is around 60 minutes. A race time outside this range shall not be grounds for redress. This changes *RRS 60.1(b)*.
- 8.3 Courses will not be shortened. This changes *RRS 32*.
- 8.4 No later than the warning signal, the race committee signal boat will display the approximate compass bearing of the first leg.

9 MARKS

- 9.1 Marks 1, 2, 3S and 3P will be **Orange Cylindrical Marks**
- 9.2 New marks, as provided in instruction 12.1, will be **Yellow Cylindrical Marks**.
- 9.3 The starting mark will be the Race committee signal vessel at the starboard end, and a boat displaying an orange flag at the port end.
- 9.4 The finishing marks will be a buoy at the starboard end, and the Race committee signal vessel at the port end. The Committee boat will also fly a blue flag to indicate it is on station for the finish.
- 9.5 A race committee boat signalling a change of a leg of the course is a mark as provided in instruction 12.2.

10 AREAS THAT ARE OBSTRUCTIONS

- 10.1 There are no known obstructions in the race area, but the race area is close to a major



shipping channel, and competitors are required to stay clear of shipping movements.

- 10.2 There is a reef at the northern end of the beach (public boat ramp), clearly marked with a stake with a green triangle.

11 THE START

- 11.1 Races will be started by using RRS 26 with the warning signal made five (5) minutes before the starting signal.
- 11.2 The starting line will be between a staff displaying orange flag on the Race committee signal vessel and the staff on the mark boat.
- 11.3 When a minimum of 12 Classic Tornados are registered for the event and will be present for the start of Race 1, they will have their own start 10 minutes after the New rig Tornados.
- 11.4 Boats whose warning signal has not been made shall avoid the starting area during the starting sequence for other races. [NP]
- 11.5 A boat starting later than 10 minutes after her starting signal will be scored Did Not Start without a hearing. This changes rule A4 and A5.
- 11.6 No race shall be started if the average wind is less than 6 knots or more than 25 knots at time between the warning signal and the starting signal.
- 11.7 A race shall be abandoned if the wind is continuously below 3 knots for any 15 minute period before the first boat that sails the course finishes. Wind has to be measured at the deck of the Race Committee boat.

12 CHANGE OF THE NEXT LEG OF THE COURSE

- 12.1 To change the next leg of the course, the race committee will lay a new mark (or move the finishing line) and remove the original mark as soon as practicable. When in a subsequent change a new mark is replaced, it will be replaced by an original mark. If Mark 1 is moved, Mark 2 will also be moved to maintain the shape of the course.
- 12.2 Except at a gate, boats shall pass between the race committee boat signalling the change of course and the nearby mark, leaving the mark to port and the race committee boat to starboard. This changes RRS 28.



12.3 Rule 33 is changed so that both 33(a)(1) and 33(a)(2) shall be signalled.

13 THE FINISH

13.1 The finishing line will be between the course side of the finishing mark, and the staff displaying orange flag on the Race Committee boat.

14 PENALTY SYSTEM

14.1 Rule 30.2 will not apply.

14.2 Rules 44.1 and 44.2 are changed so that only one turn, including one tack and one gybe, is required.

14.3 Rule 44.3 will not apply.

14.4 A boat that has taken a penalty or retired under RRS 44.1 shall complete an acknowledgement form at the race office within the protest time limit.

14.5 Except for rules of Part 2, rule 28 and rule 30, penalties may be at the discretion of the jury and may be less than disqualification.

15 TIME LIMIT

15.1 The time limit for a race is 90 minutes.

15.2 The time limit for the rounding of Mark 1 is 20 minutes. If no boat has passed Mark 1 within the Mark 1 time limit the race will be abandoned. This changes RRS 62.1(a).

15.3 Boats failing to finish within 30 minutes after the first boat shall be deemed not to have finished and shall be scored as a Did Not Finish without a hearing. This changes rules 35, A4 and A5.

15.4 The target time for the race is 60 minutes

16 PROTESTS AND REQUESTS FOR REDRESS

16.1 Protest forms are available at the race office located on **the Main Deck of the Takapuna Boating Club**. Protests shall be delivered there within the protest time limit.



- 16.2 The protest time limit is 90 minutes after the last boat has finished the last race of the day or the race committee signals no more racing today, whichever is later.
- 16.3 The same protest time limit applies to protests by the race committee and jury about incidents they observe in the racing area and to requests for redress. This changes rules 61.3 and 62.2.
- 16.4 Notices will be posted within 30 minutes of the protest time limit to inform competitors of hearings in which they are parties or named as witnesses. Hearings will be held in the protest room, located on **the Main Deck of the Takapuna Boating Club**, beginning at the time posted. A delay in the time posted for hearings will not be ground to ask for redress. Conversely hearings may start before the posted time, under the agreement of all parties involved.
- 16.5 Notices of protests by the race committee or protest committee will be to inform boats under RRS 61.1(b).
- 16.6 For the purpose of rule 64.3(b) the "authority responsible" is the equipment inspector appointed by the organising authority.
- 16.7 Breaches of instructions 11.4, 18, 21, 24 and 25 will not be grounds for a protest by a competitor. This changes rule 60.1(a). Penalties for these breaches may be less than disqualification if the jury so decides.
- 16.8 No official measurement shall take place after Race 1, except as the result of a protest or due to the replacement, alteration or repair of any item.
- 16.9 No competitor may protest a question of measurement later than the normal protest time applying to Race 1, except on the grounds that there has been subsequent alteration of the boat or its equipment.
- 16.10 On the last scheduled day of racing a request for reopening a hearing shall be delivered
- a) within the Protest Time Limit, if the party requesting reopening was informed of the decision on the previous day
 - b) no later than 30 minutes after the party requesting reopening was informed of the decision on that day. This changes rules 66.
- 16.11 On the last scheduled day of racing a request for redress from a protest committee decision shall be delivered no later than 30 minutes after the decision was posted. This changes RRS 62.2.
- 16.13 Decisions of the international jury will be final as provided in RRS 70.5.



17 SCORING

17.1 The Low Point System of RRS Appendix A will apply.

17.2 4 races are required to be completed to constitute a series.

17.3 Discards will be scored as follows:

- When fewer than 5 races have been completed, a boat's series score will be the total of her race scores.
- When 5 or more races have been completed, a boat's series score will be the total of her race scores excluding her worst score.

17.4 To request correction of an alleged error in posted race or series results, a boat may complete a scoring enquiry form available at the race office, on the Main Deck of the Takapuna Boating Club.

17.5 There will be a final official ranking list for the Open Tornado World Championship, the Mixed Global Championship, the Youth World Championship and the Classic Global Tornado Cup.

18 SAFETY REGULATIONS

18.1 Check-out and check-in:

Competitors shall individually check out before racing by personally signing the check-out sheets located on the Main Deck of the Takapuna Boating Club.

18.2 A boat that retires from a race shall notify the race committee as soon as possible. The boat shall complete a retirement declaration form

18.3 The “check- out” (sign on) will open after the skippers Meeting until the first warning signal of the day.

18.4 The “check- in” (sign off) will open all day long (in case of retirements).

18.5 Time limit for signing:

- a) Check out: Time of first starting signal of the first race of the day. *
- b) Check in: Protest Time limit

18.6 Failing to “check out” or “in” will result as a standard penalty of 5 points for each failure. “[SP]” Moreover, the organization may ask the concerned crew(s) to pay back



for the expenses due to useless research operations.

18.7 In case of any trouble on the water, competitors are required to use the “EMERGENCY SIGNAL” as described in “Attachment” C. “[NP]”

18.8 The Race Committee will protest a boat for a breach of the safety regulations

18.9 Boats not leaving the shore for a scheduled race shall promptly notify the race office.

19 REPLACEMENT OF CREW OR EQUIPMENT

19.1 Substitution of competitors will not be allowed without prior written approval of the race committee, and only in the case of sickness, accident, or special circumstances. “[DP]”

19.2 Substitution of damaged or lost equipment will not be allowed unless authorized by the race committee, and that the equipment inspector deems to be damaged beyond repair. Requests for substitution shall be made to the committee at the first reasonable opportunity. Replaced equipment must measure within the class rules. “[DP]”

20 EQUIPMENT INSPECTION

20.1 All boats must be kept at the regatta site commencing at the time of registration and continuing until the end of the event. Removal of any boat from the regatta site during the event shall require prior written permission from the equipment inspector.

20.2 A boat or equipment may be inspected at any time for compliance with the class rules, Equipment Inspection Regulations, and Sailing Instructions. On the water, a boat can be instructed by the equipment inspector to proceed immediately to a designated area for inspection.

20.3 The equipment inspector shall be a Tornado World Sailing international measurer.

21 EVENT ADVERTISING

21.1 Boats may be required to display advertising supplied by the organising authority.

21.2 If this rule is broken, World sailing Regulation 20.9.2 applies “[DP]”

22 SPARE



23 OFFICIAL BOATS

- 23.1 Official boats are under the authority of the Race Committee will be identified by flying the Takapuna boating Club Pennant.

24 SUPPORT PERSONNEL AND SUPPORT BOATS

- 24.1 Team leaders, coaches and support personnel shall register at the Race Office before the first racing day.
- 24.2 Except when giving help as required by RRS 1.1 or as directed by the race committee, all support or coach boats shall remain:
- outside the lay lines of the course
 - at least 100 meters from any boat racing from the time of the warning signal until all boats have finished or the race committee signals a postponement or abandonment
 - at least 50 meters to leeward of the start/finish line and its extensions
- 24.3 Attention is drawn the relevant local council bylaws regarding wearing of lifejackets and other restrictions.
- 24.4 A major shipping channel is near the race area, and all support boats are required to keep clear of any shipping.
- 24.5 No anchoring is allowed due to a telecommunication cable that transits the area.
- 24.6 Support Boats can be called upon to assist in emergencies.
- 24.7 When flag V (with a long sound signal) is displayed on a committee boat all support boats are requested to remain afloat and assist all sailors.

25 TRASH DISPOSAL

- 25.1 A boat shall not discharge rubbish or Trash in the water.
- 25.2 Trash may be placed aboard support or official boats.



26 BERTHING

26.1 Boats shall be kept in their assigned places (if allocated) in the boat park.

27 RADIO COMMUNICATIONS

27.1 Except in an emergency, a boat shall neither make radio transmissions while racing nor receive radio communications. This restriction also applies to mobile telephones.

28 PRIZES

28.1 Prizes will be given as follows:

- Trophies will be awarded to the top 5 teams.
- Trophies will be awarded to the top 5 "Mixed" teams.
- Trophies will be awarded to the top 3 "Classic Tornado" teams.
- Trophies will be awarded to the top 5 "Youth" teams. (*both crew members born after 1 January 1993*)

28.2 Special Prizes may be awarded at the discretion of the Organizing Authority to teams who attend the prize giving ceremony.

28.3 The maximum number of Trophies for each categories will be the number of entries in that category less one.

29 DISCLAIMER OF LIABILITY

29.1 Competitors will sail entirely at their own risk. See rule 4, Decision to Race. The organizing authority, International Tornado Class Association and all parties involved in the regatta organization will not accept any liability for material damage or personal injury or death sustained in conjunction with or prior to, during, or after the regatta.

29.2 Sailing by its nature is an unpredictable sport and therefore inherently involves an element of risk. By taking part in the event, each competitor agrees and acknowledges that:

- They are aware of the inherent element of risk involved in the sport a responsibility for the exposure of themselves, their crew and their boat to such inherent risk whilst taking part in the event.
- Competitors are responsible for the safety of themselves, their crew, their boat and their other property whether afloat or ashore.
- They accept responsibility for any injury, damage or loss to the extent caused by their own actions or omissions.
- Their boat is good in order, equipped to sail in the event and they are fit to participate.



- The provision of a race management team, patrol boat and other officials and volunteers by the event organiser does not relieve them of their own responsibilities.
- The provision of control boat cover is limited to such assistance, particularly in extreme weather conditions as can be practically provided in the circumstances.

30 INSURANCE

30.1 Each participating boat shall have current third-party liability insurance with, including coverage when racing at the venue of the championship, of not less than NZ\$1,000,000, per incident (or equivalent). Proof of this insurance shall be available at all times, and must be presented at Registration.

30.2 Insurance will be available for purchase at registration

31 RIGHTS TO USE NAME AND LIKENESS

31.1 By participating in this event, competitors automatically grant to the organizing authority and the event sponsors the right, in perpetuity, to make, use, and show, at their discretion, any photography, audio and video recordings, and other reproductions of them made at the venue or on the water from the time of their arrival at the venue, until their final departure, without compensation.

32 ALTERATIONS AND ADDITIONS

32.1 Alterations or additions to these sailing instructions shall only be with the prior agreement of the ITA Representative.

RACE OFFICIALS

Race Committee Chair: Evelyn Johnson

Equipment inspector: Aaron Duncan

Jury Chairman: Sir Henry Sleutel

ITA representative: Jurgen Jentsch

International Tornado Association



ATTACHMENT A: CHAMPIONSHIP COURSE

COURSE ILLUSTRATION

1. The Course:

- for the new rig Tornado is:

Start -1- 2- 3S / 3P - 1-2-3S/3P - 1- 2 – Finish

- for the Classic Tornado is:

Start – 1 – 2 – 3S/3P – 1 – 2 - Finish

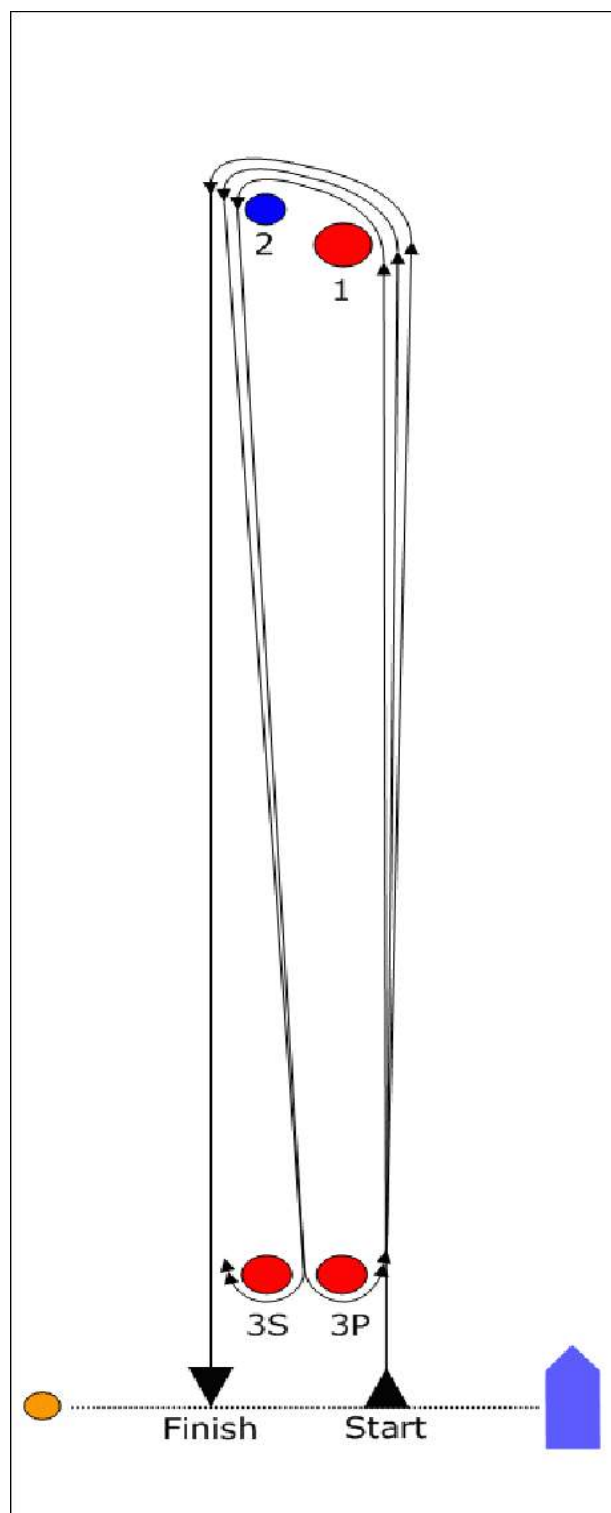
1. Marks 1 & 2, the windward marks, shall be rounded to port.

2. Mark 2 shall be set approximately 100 meters to port of Mark 1. The bearing to Mark 2 from Mark 1 shall be approximately 70 degrees to port of the bearing to Mark 1 from the Start or previous leeward gate.

3. Marks 3S/3P may be disregarded on the first windward leg and on the final downwind leg.

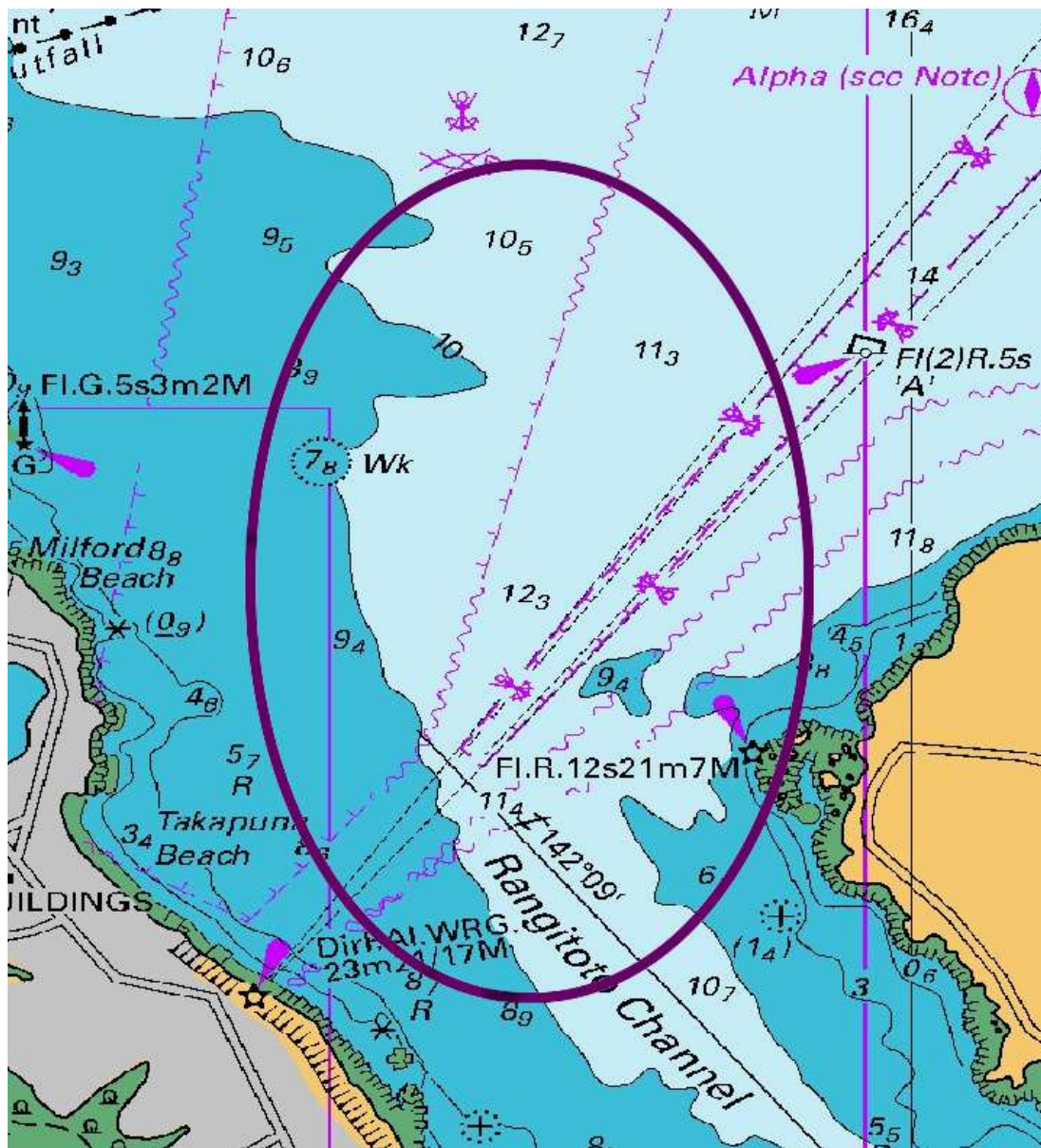
4. Marks 3S and 3P, the leeward marks, shall be set as a gate.
Mark 3S shall be rounded to starboard *or*
Mark 3P shall be rounded to port.

5. The Course length shall normally be set so the race will last approximately 60 minutes in the anticipated wind conditions. Failure to comply with this paragraph will not be grounds for a request for redress.





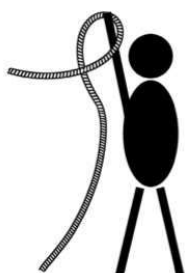
ATTACHMENT B: RACE AREA





ATTACHMENT C:

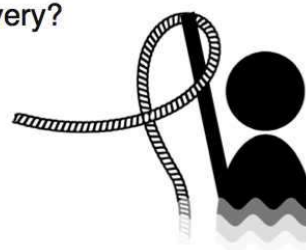
Emergency Signals



I need to be tugged:
put up tow-line or any
other line



Thumb up:
I'm good - no help required



Capsize rope up:
I need help!



keep distance:
Go away sign - move open
hand away from body



I need help from motorboat:
Move both hands up and down